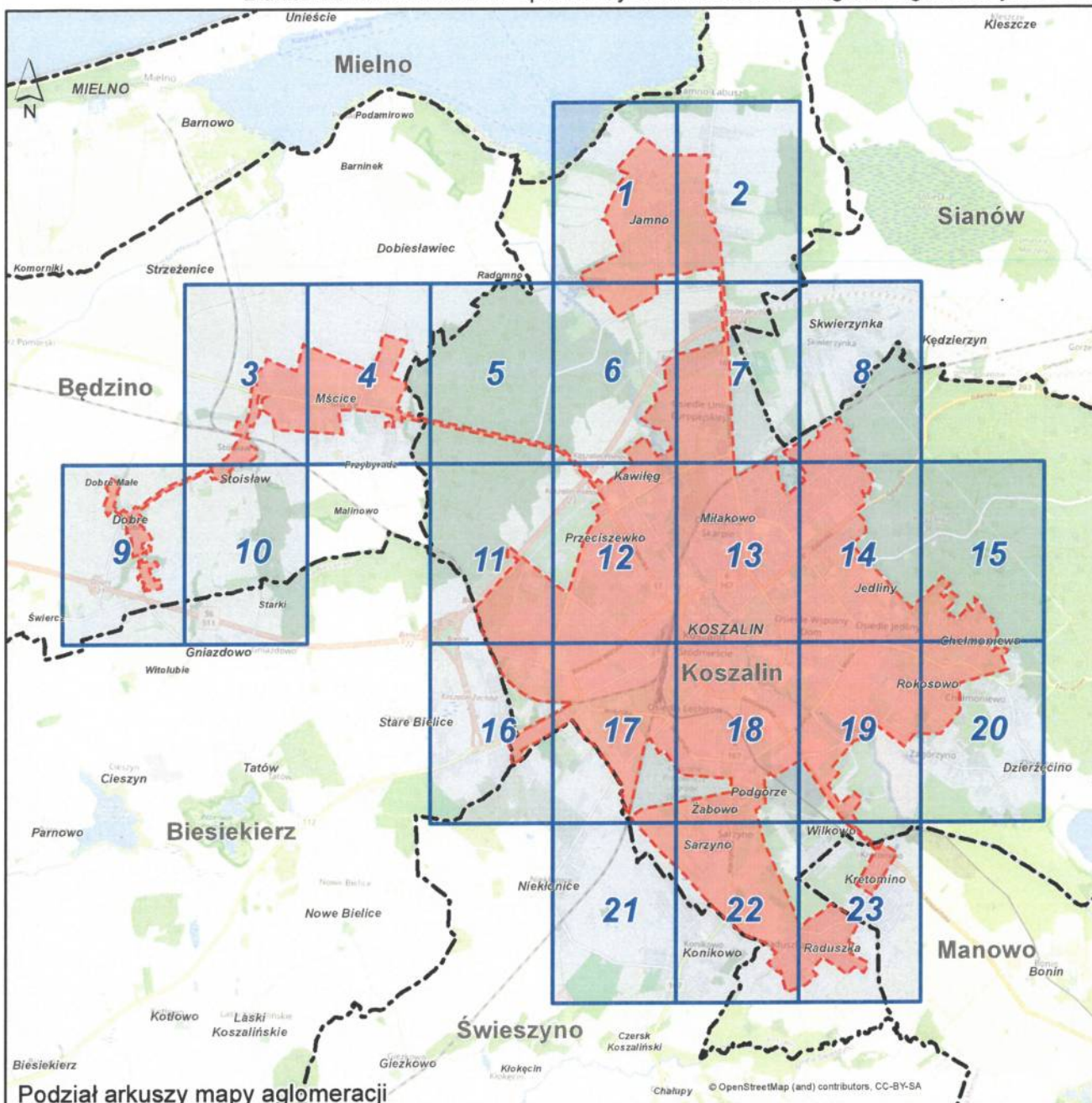



Załącznik nr 2 do Uchwały Nr..... Rady Miejskiej w Koszalinie
z dnia..... w sprawie wyznaczenia obszaru i granic aglomeracji Koszalin



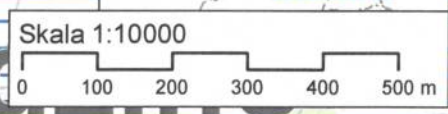
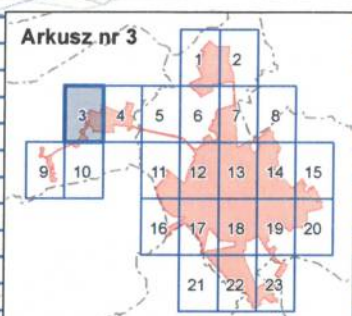
Podział arkuszy mapy aglomeracji

Legenda do arkuszy w skali 1:10000

- | | | | |
|---|---|---|--|
|  | Obszar aglomeracji |  | Obszary mające znaczenie dla Wspólnoty Natura 2000 |
|  | Granice gmin |  | Użytki ekologiczne |
|  | Bezpośrednia strefa ochrony ujęcia wody |  | Zespoły przyrodniczo - krajobrazowe |
|  | Pośrednia strefa ochrony ujęcia wody |  | Obszary chronionego krajobrazu |
|  | Oczyszczalnie ścieków |  | Pomniki przyrody |

GŁÓWNY SPECJALISTA
mgr inż. Robert Kretkowski
3.12.2020r.

PREZYDENT MIASTA
Piotr Jedliński

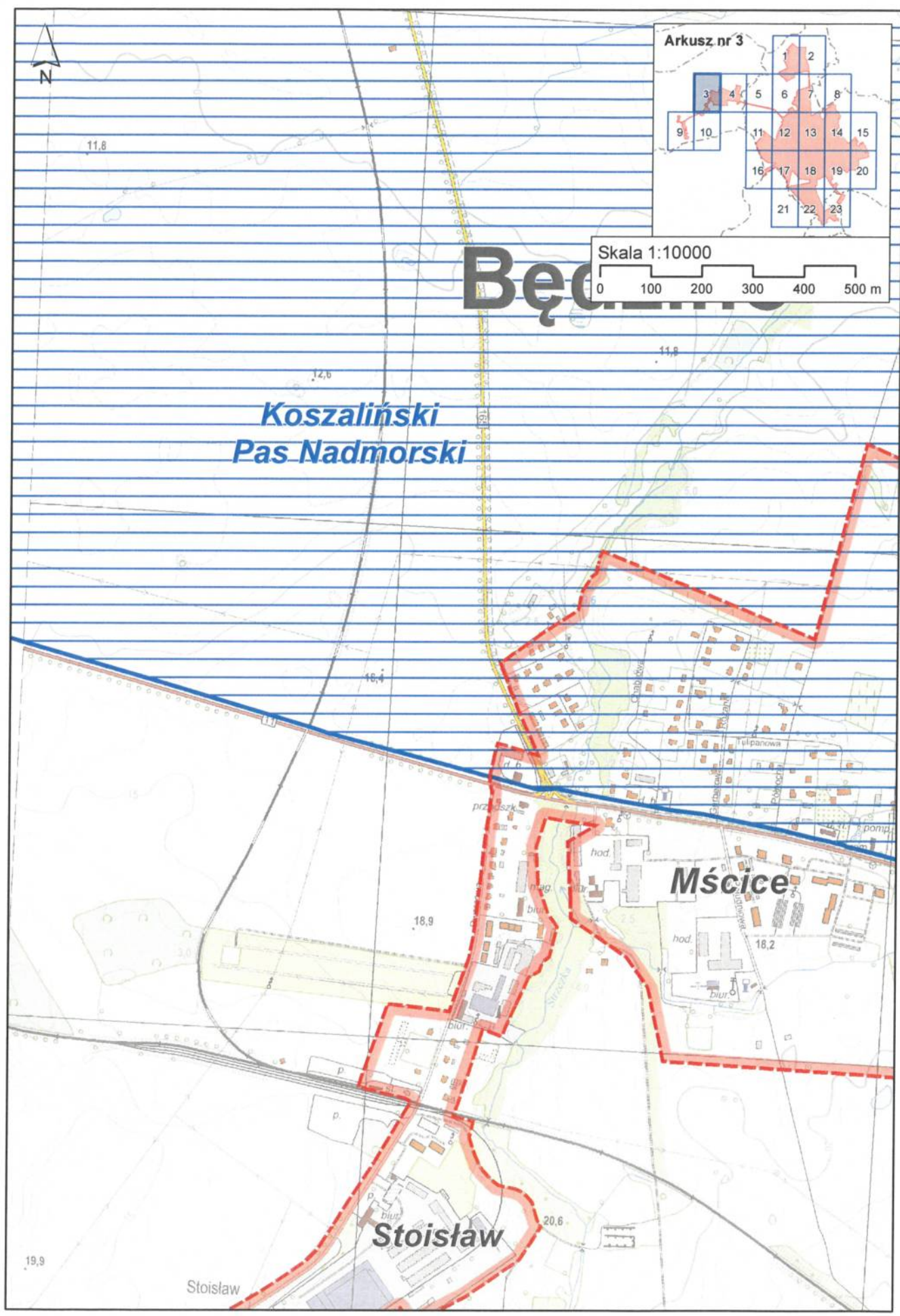


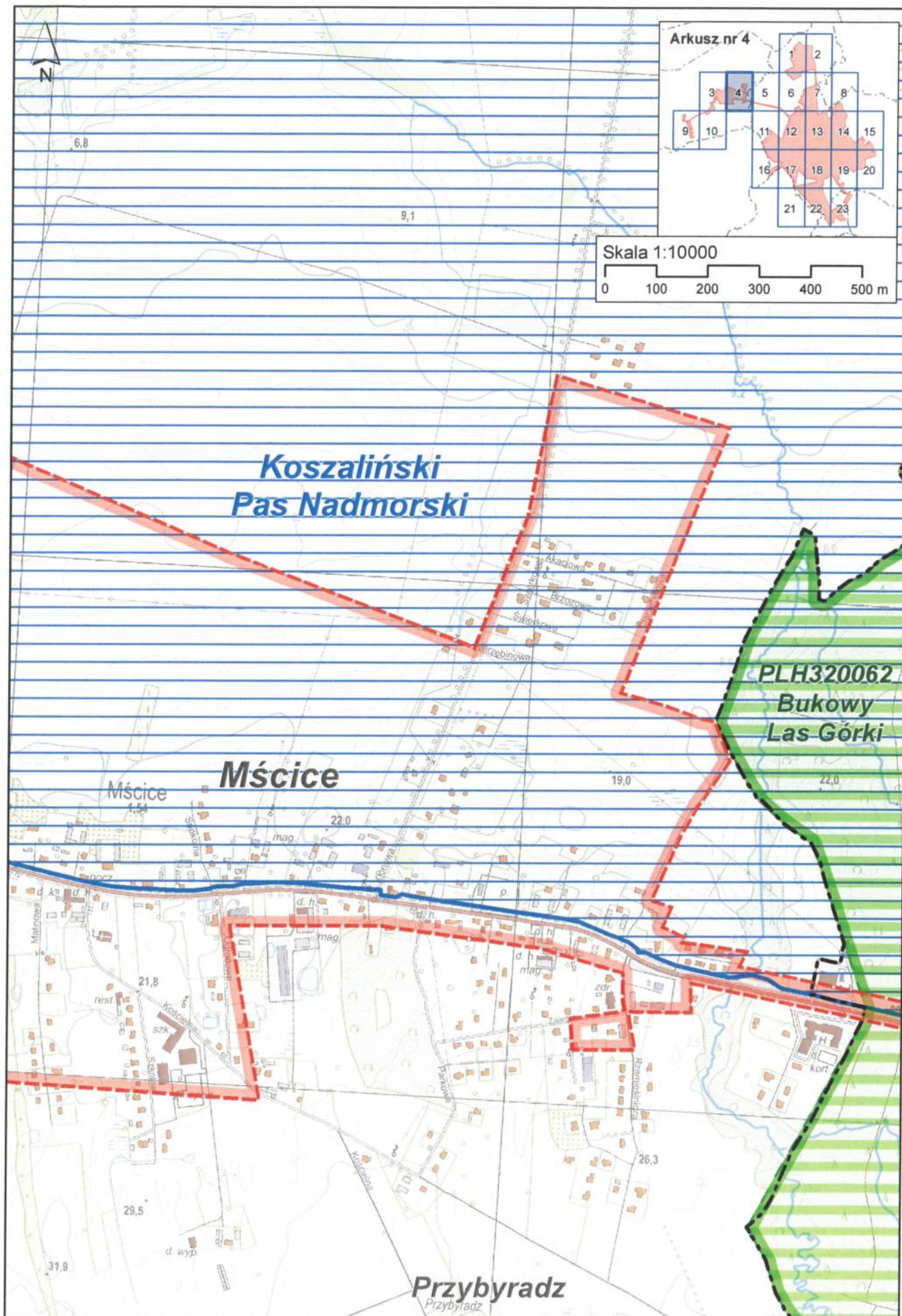
**Koszaliński
Pas Nadmorski**

Bęciszewo

Mścice

Stoisław





Arkusz nr 4

Skala 1:10000

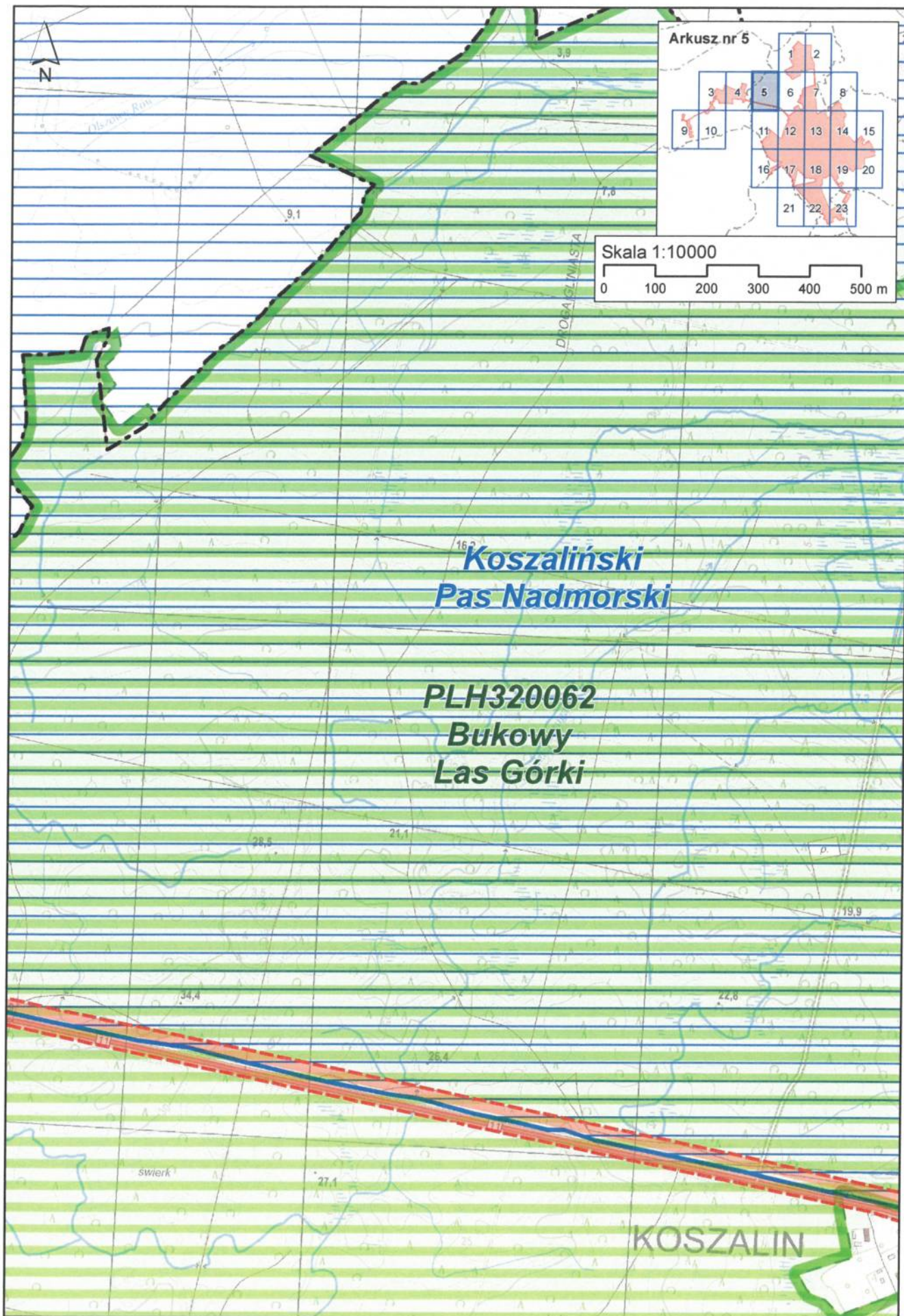
0 100 200 300 400 500 m

**Koszaliński
Pas Nadmorski**

**PLH320062
Bukowy
Las Górki**

Mścice

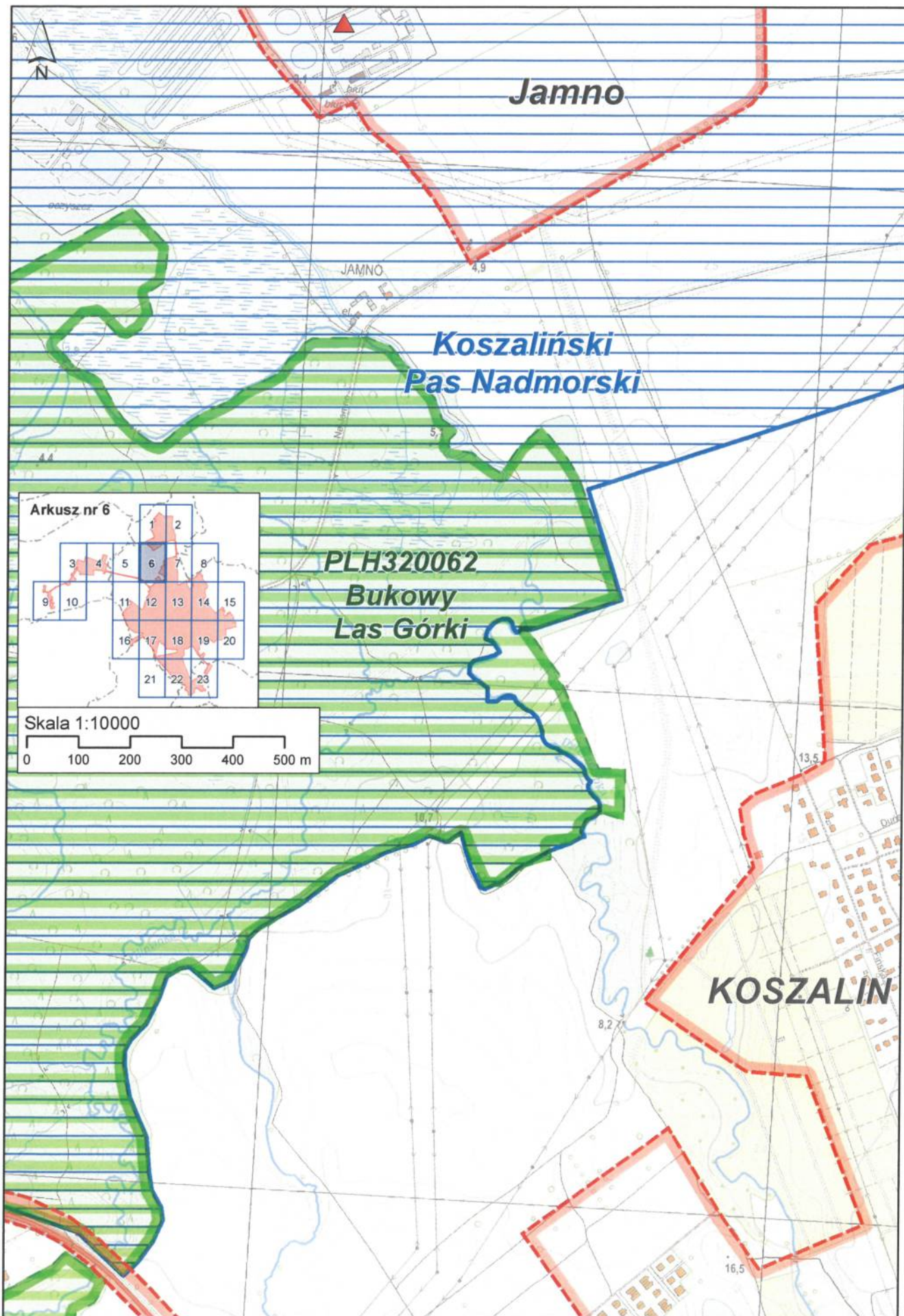
Przybyradz
Przybyradz



**Koszaliński
Pas Nadmorski**

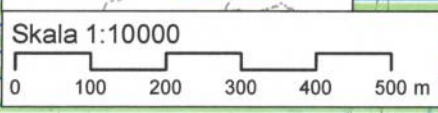
**PLH320062
Bukowy
Las Górki**

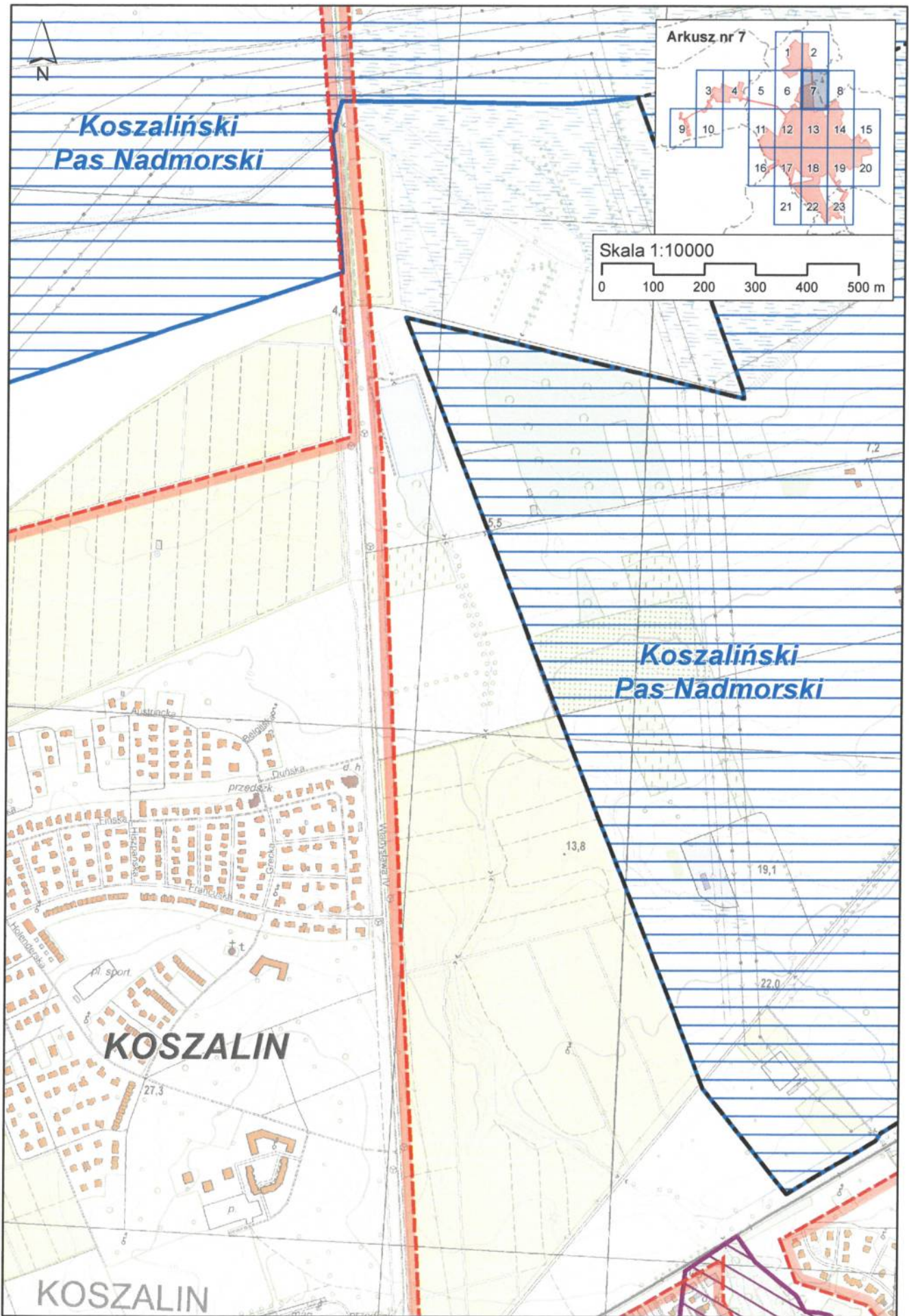
KOSZALIN

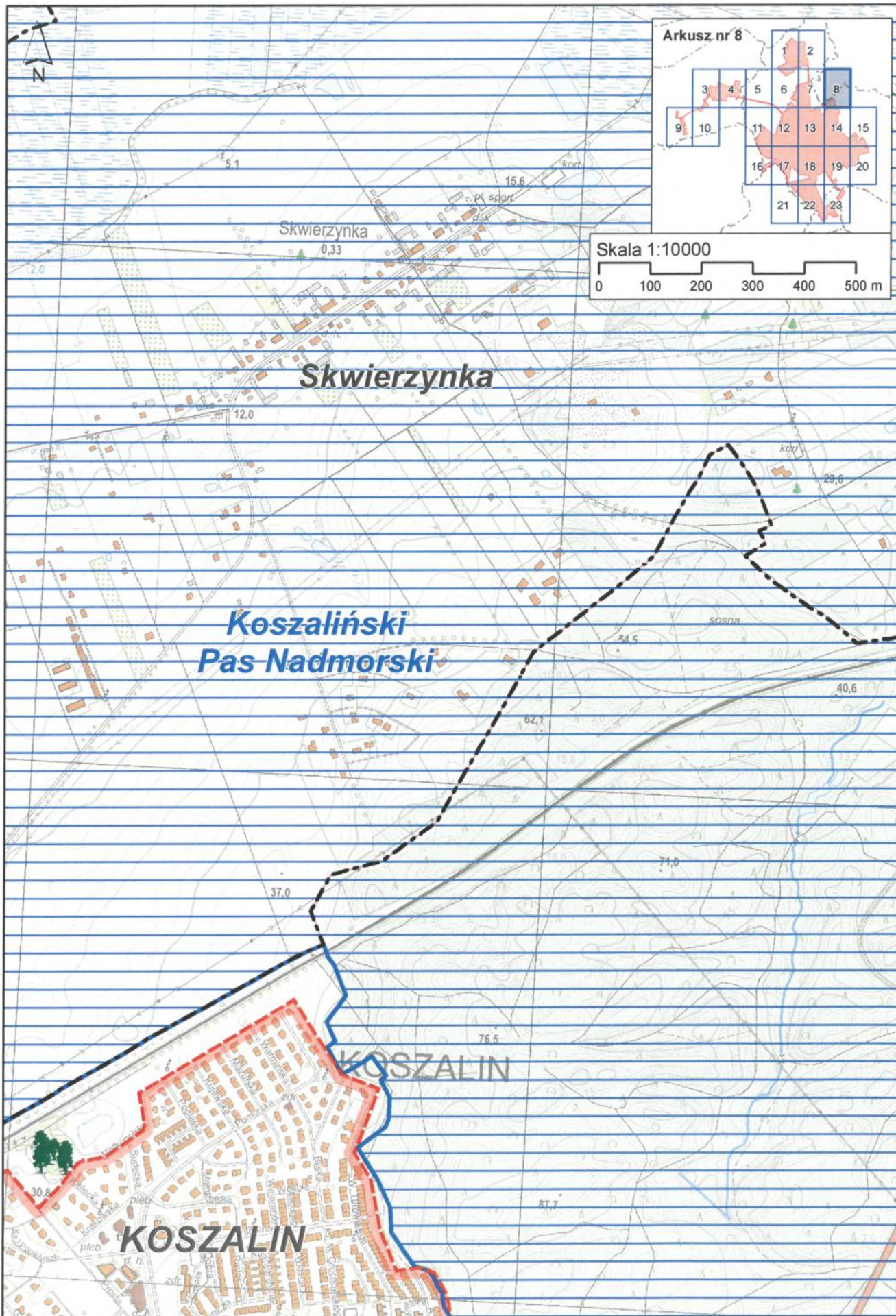


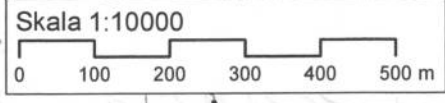
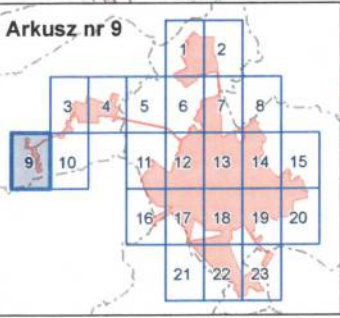
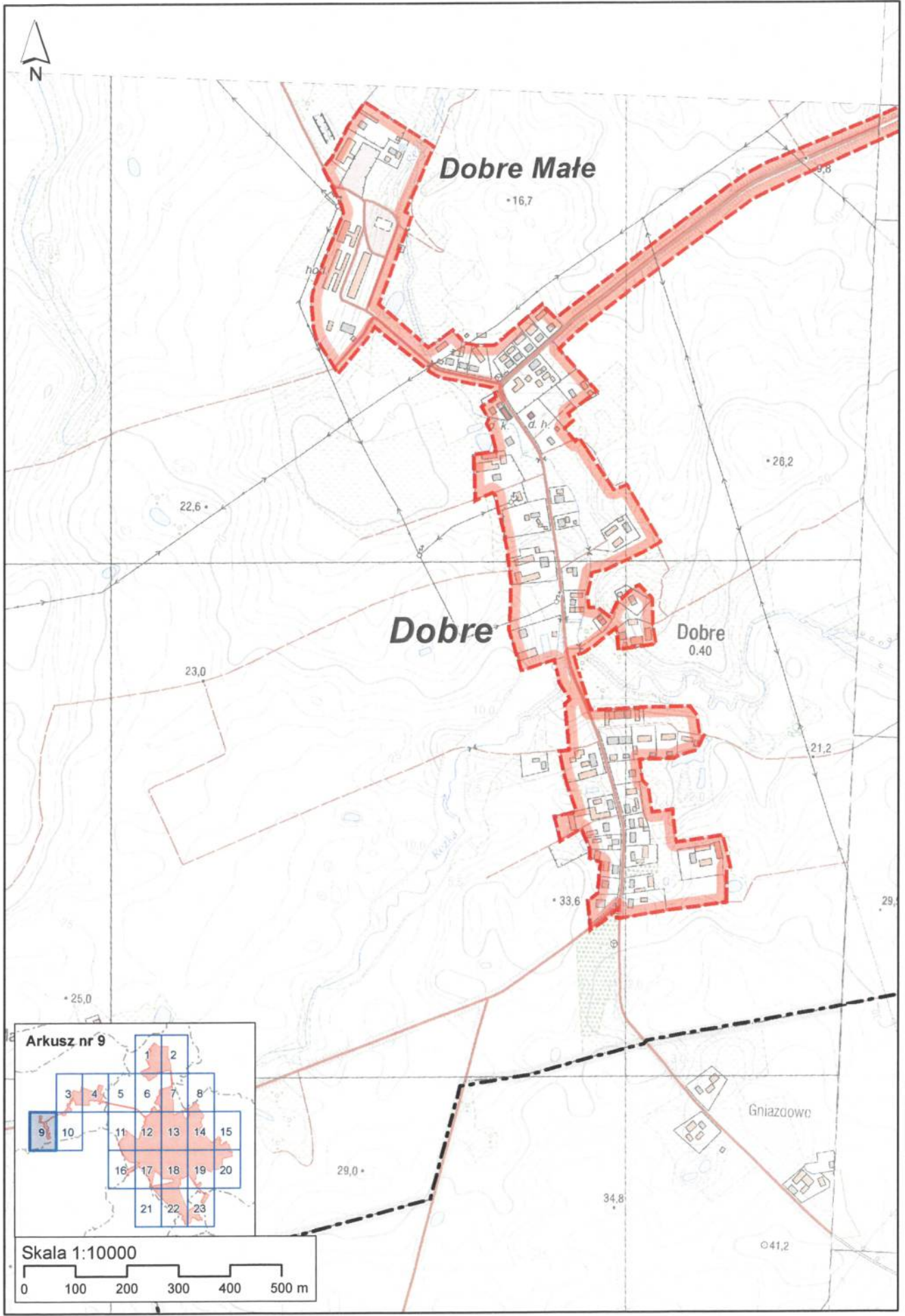
Arkusz nr 6

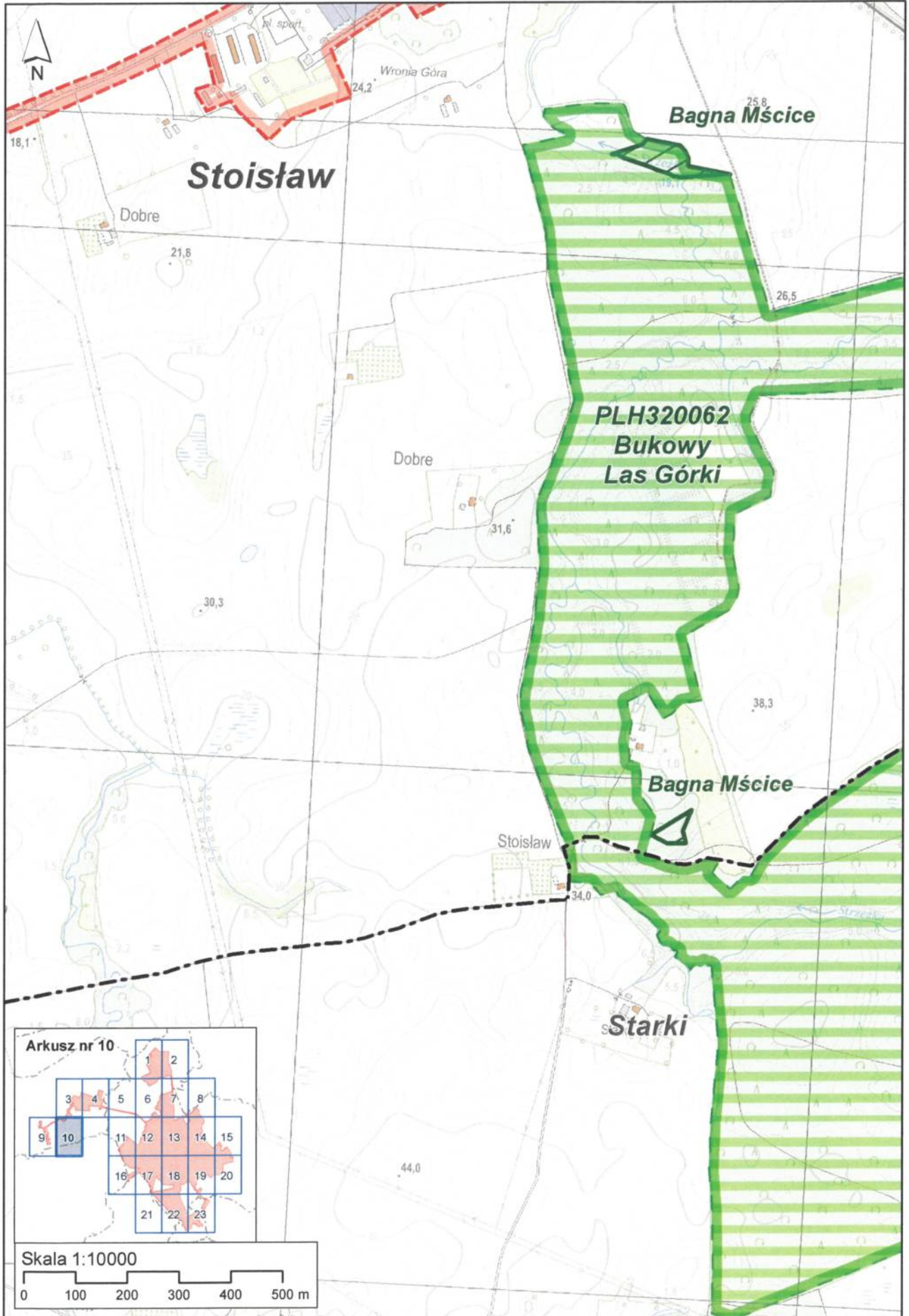
	1	2							
3	4	5	6	7	8				
9	10	11	12	13	14	15			
		16	17	18	19	20			
		21	22	23					

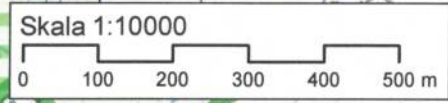
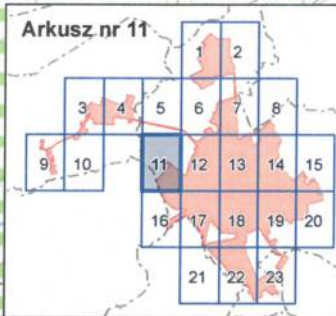






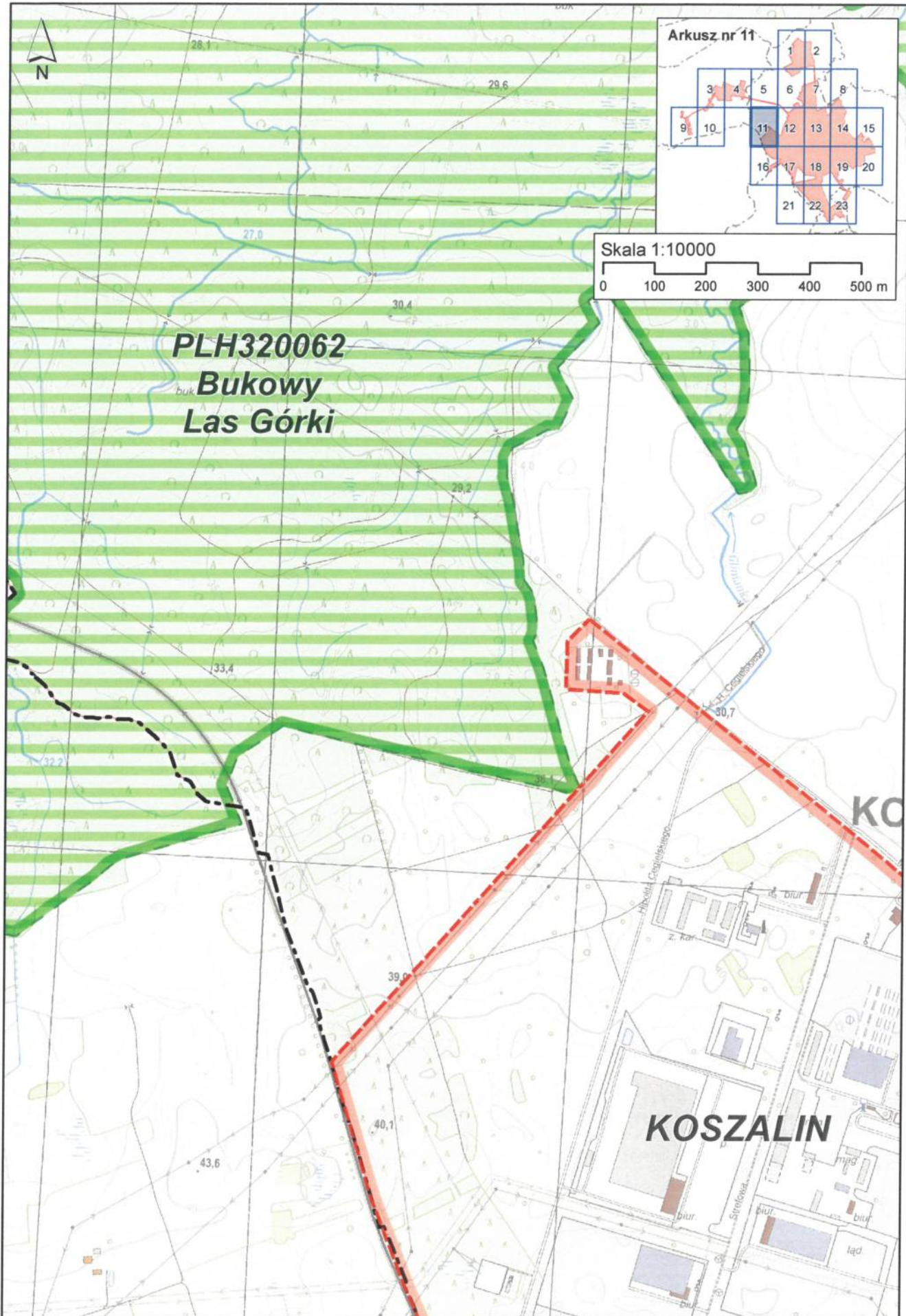


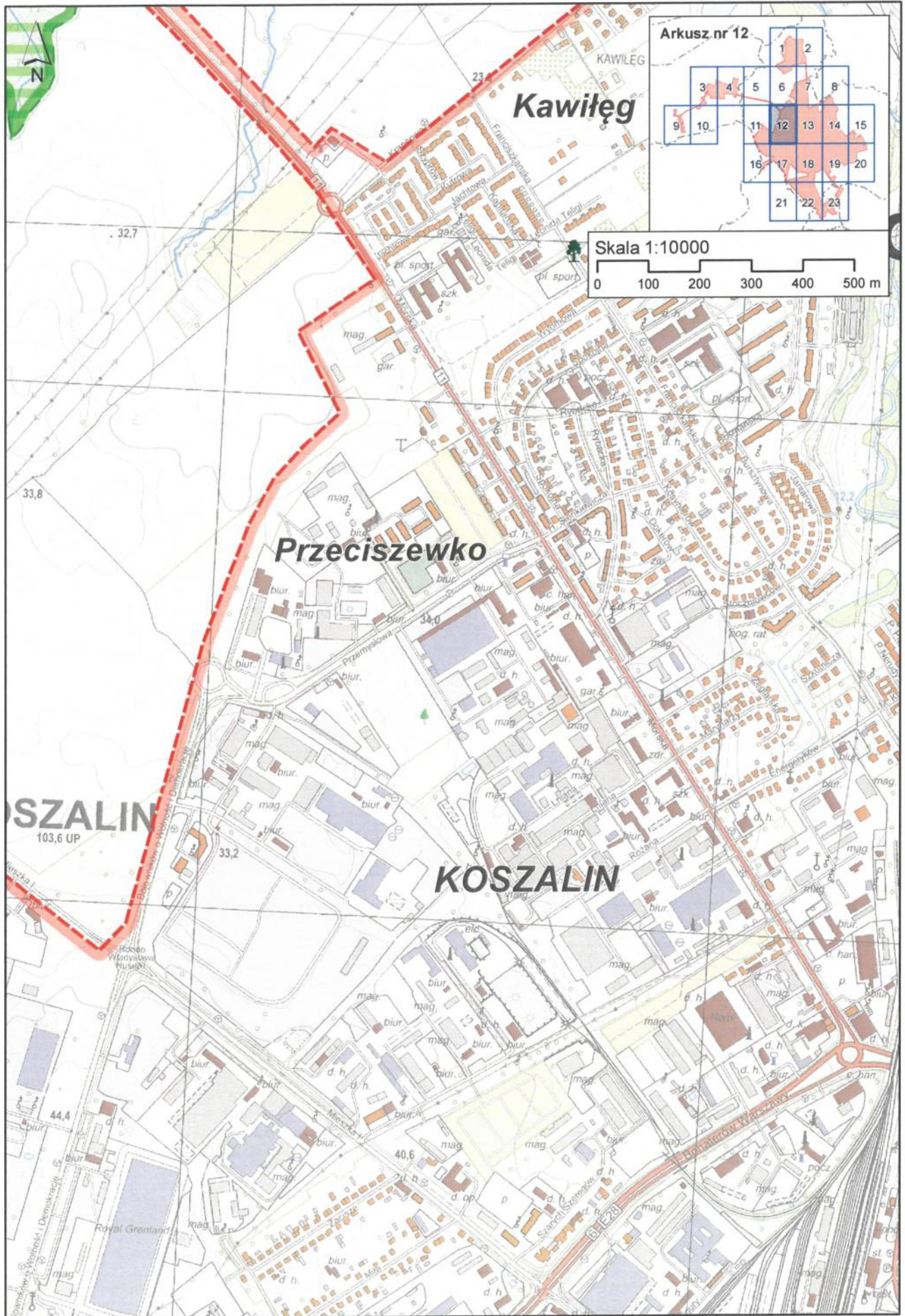




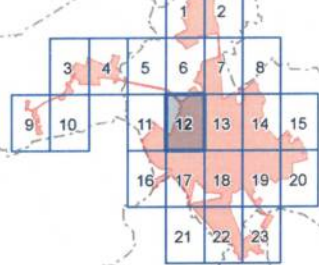
PLH320062
buk **Bukowy**
Las Górki

KOSZALIN





Arkusz nr 12



Skala 1:10000

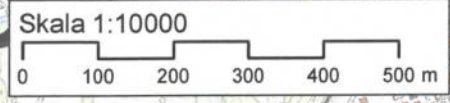
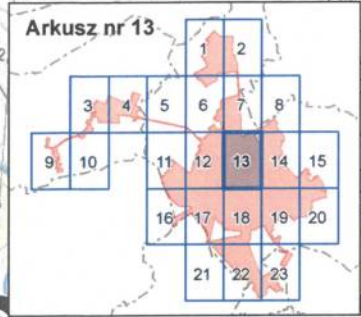


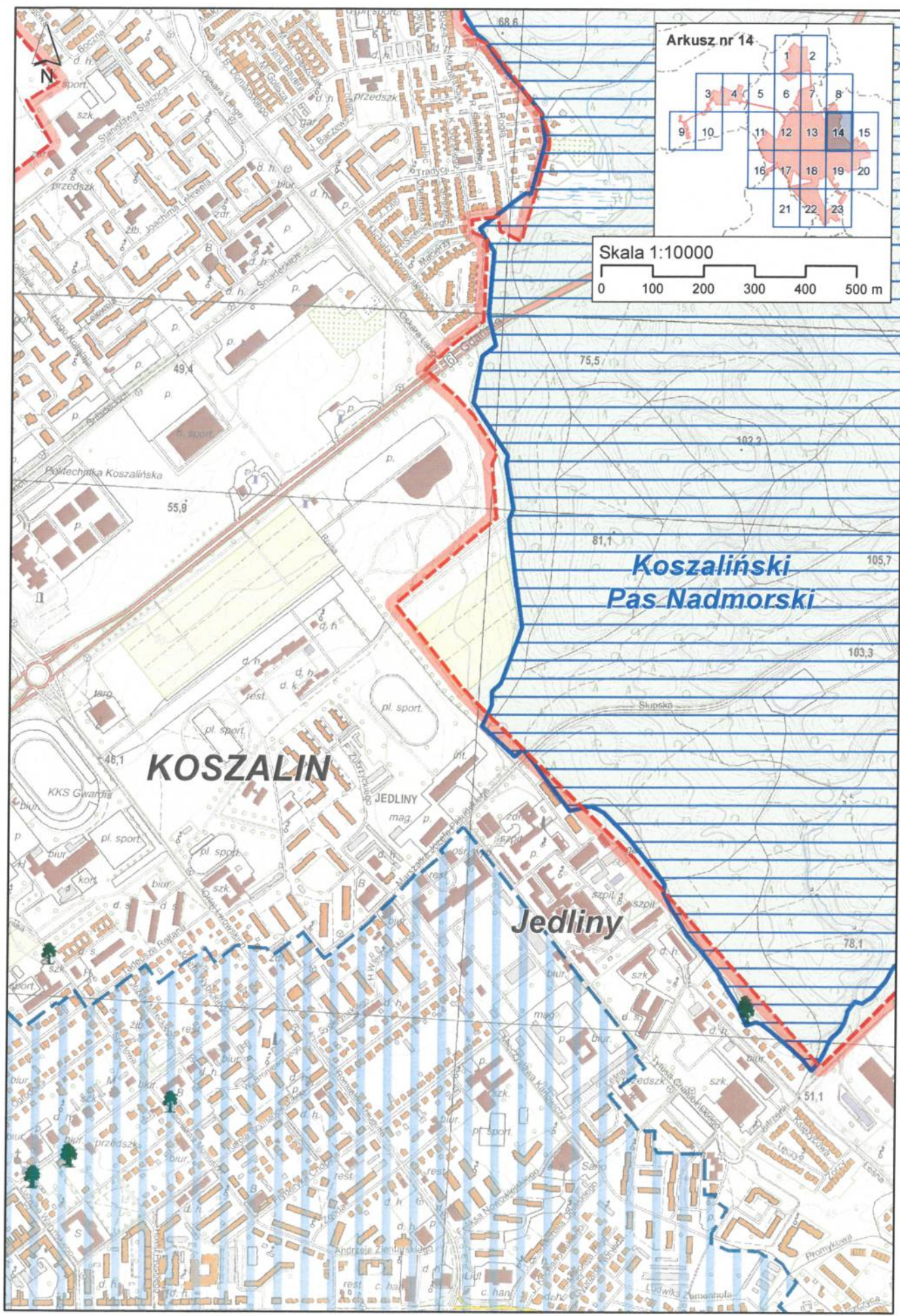
Kawileg

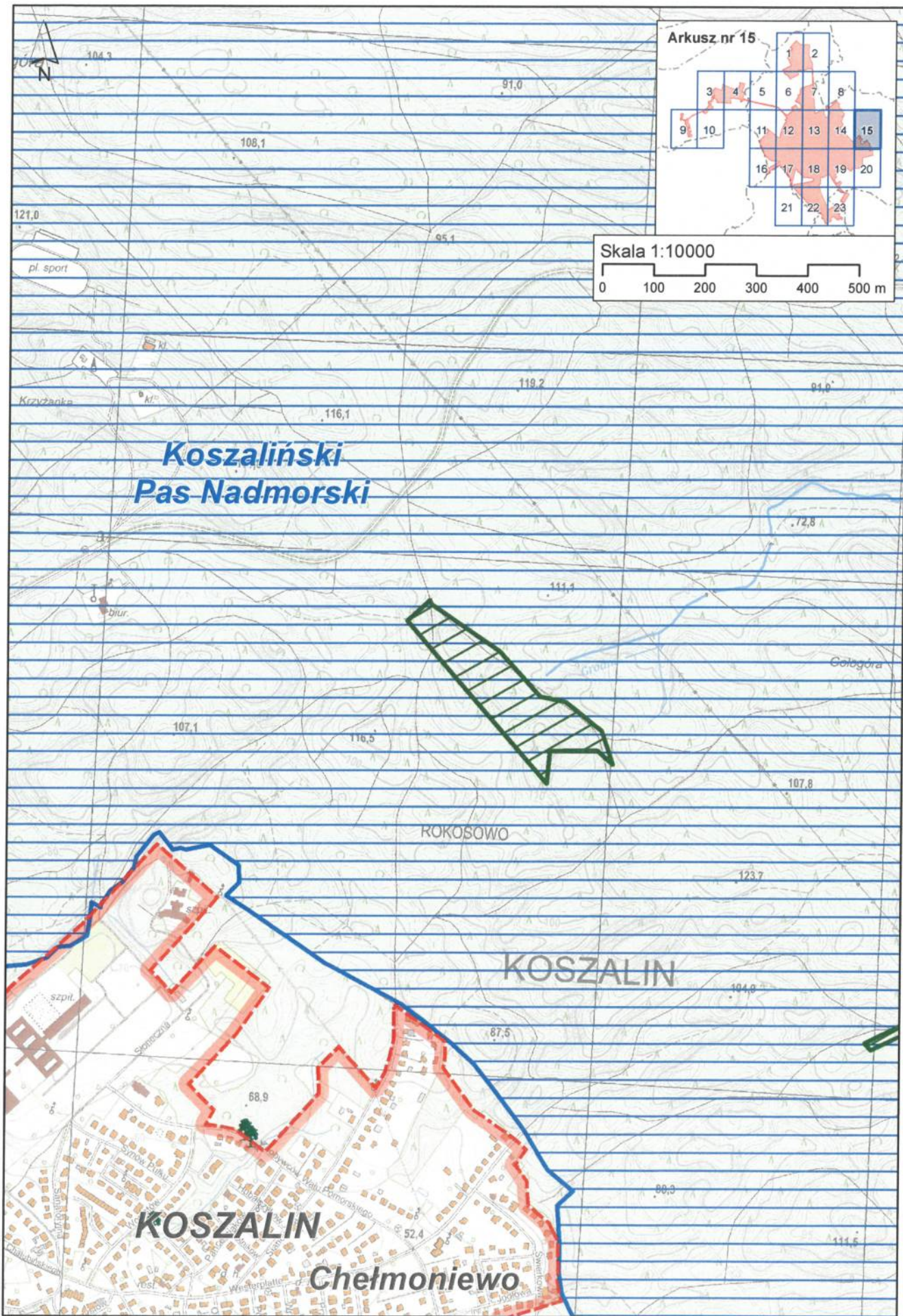
Przeciszewko

KOSZALIN
103,6 UP

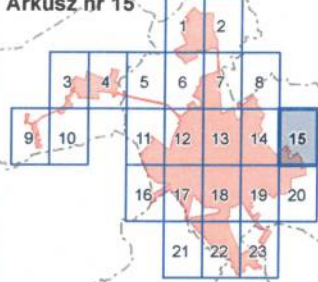
KOSZALIN





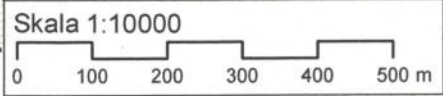
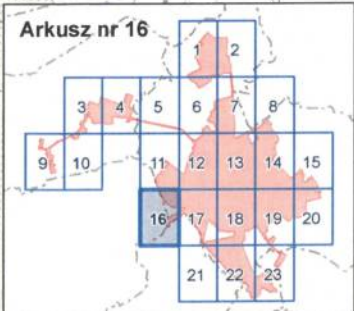
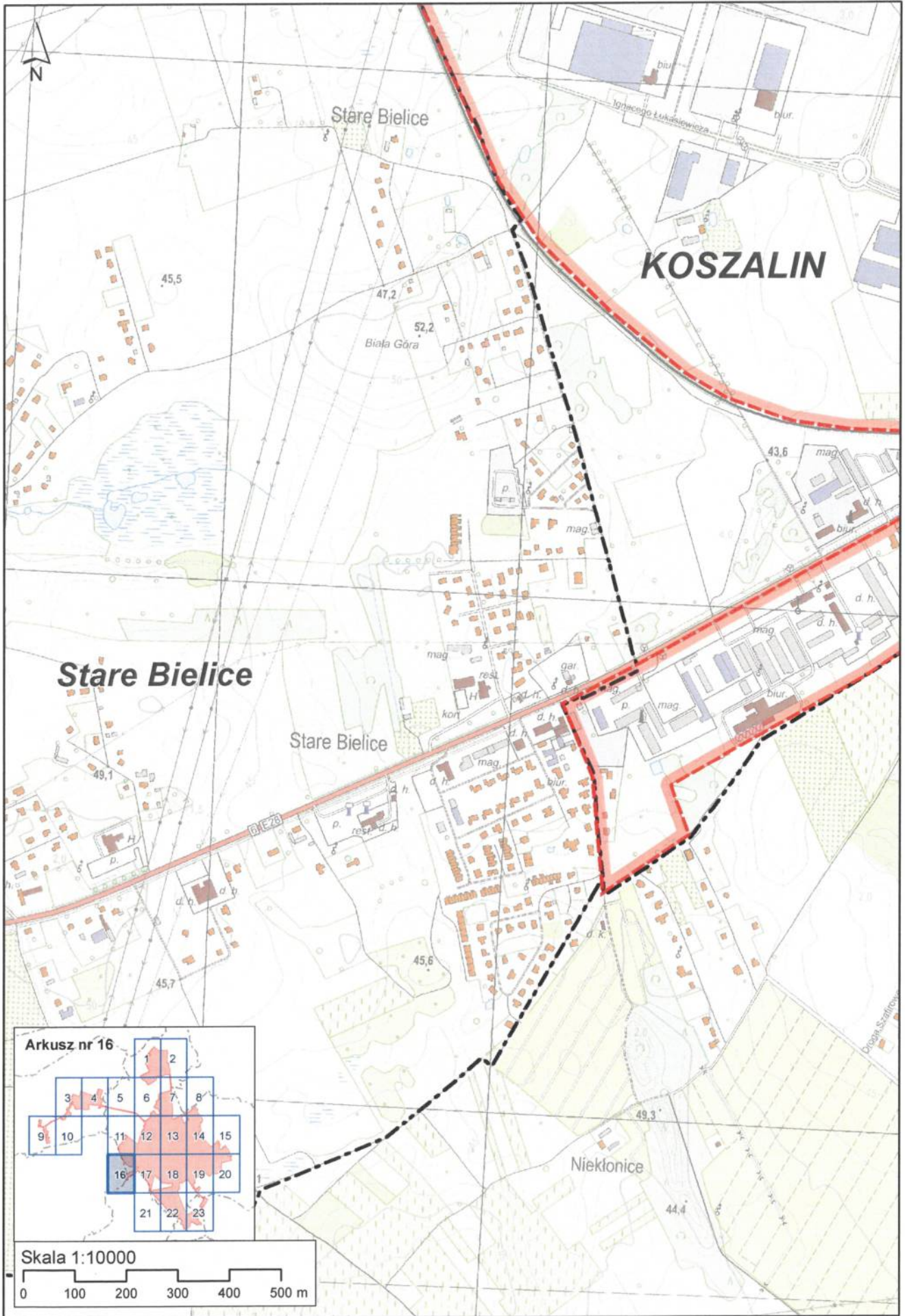


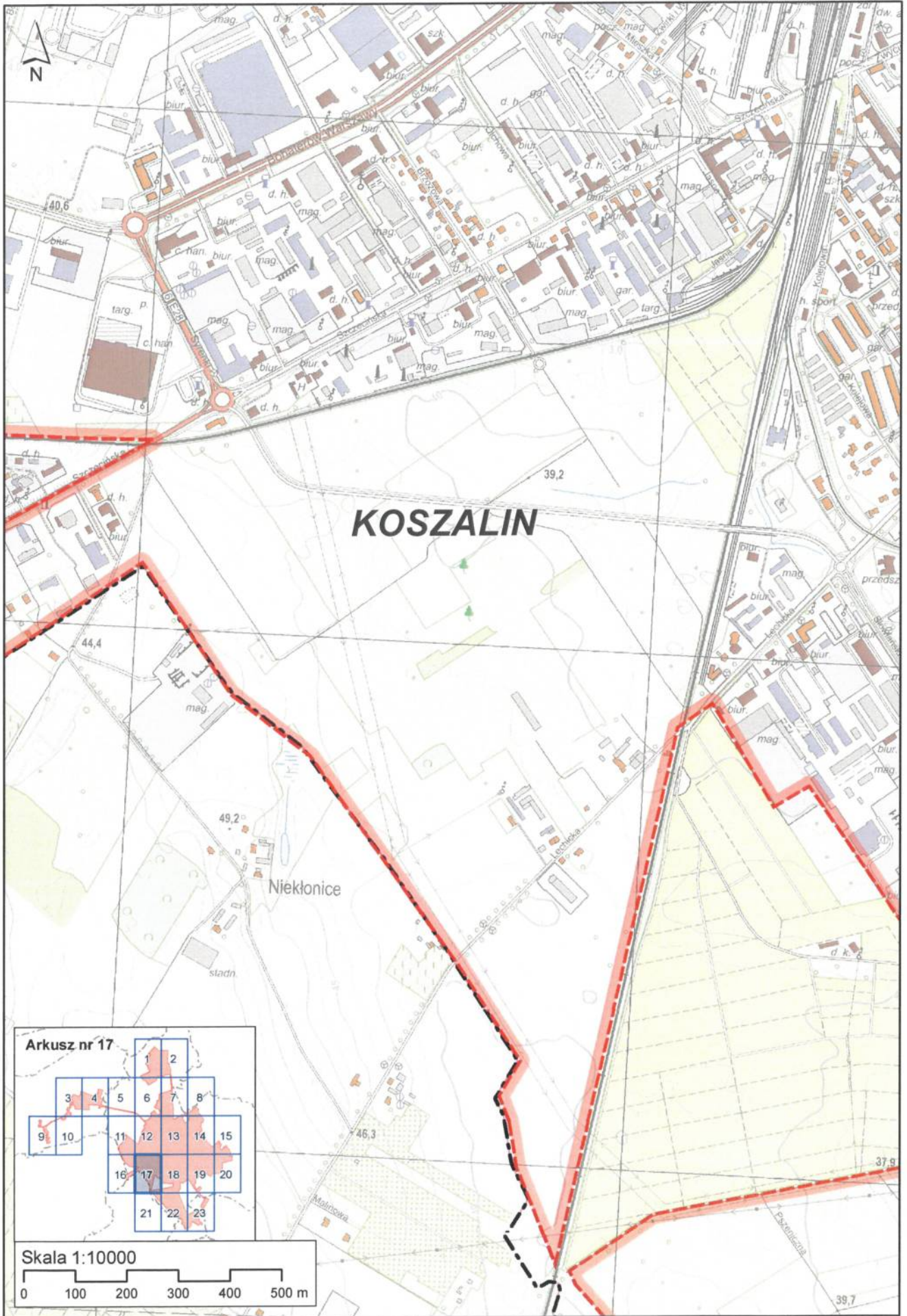
Arkusz nr 15



Skala 1:10000

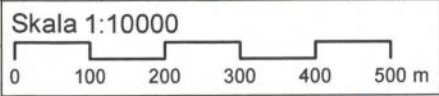
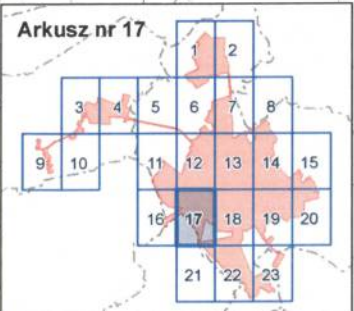


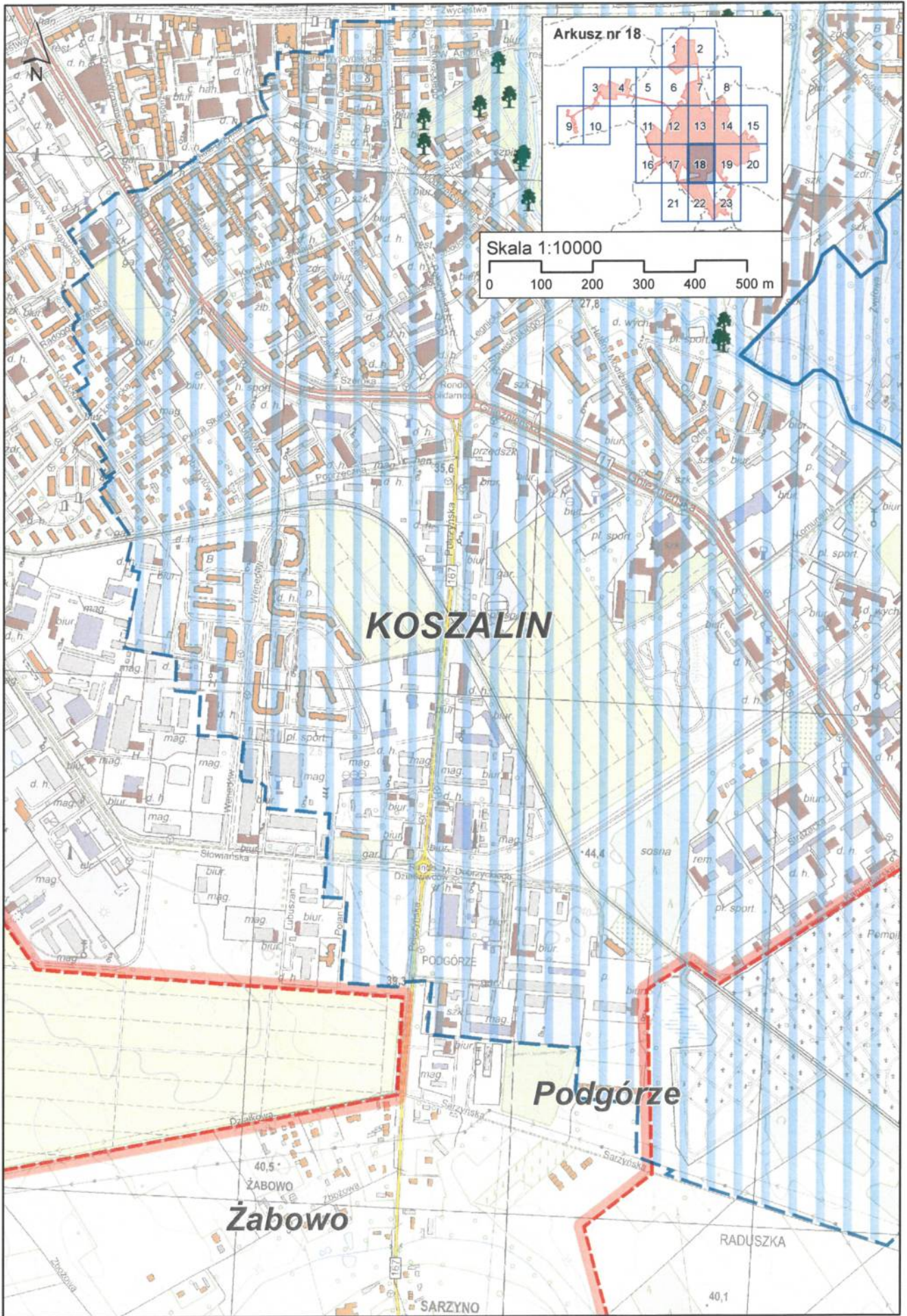




KOSZALIN

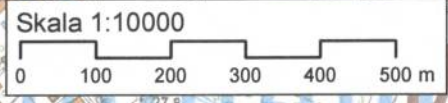
Niekłonice





Arkusz nr 18

		1	2			
	3	4	5	6	7	8
9	10	11	12	13	14	15
		16	17	18	19	20
		21	22	23		



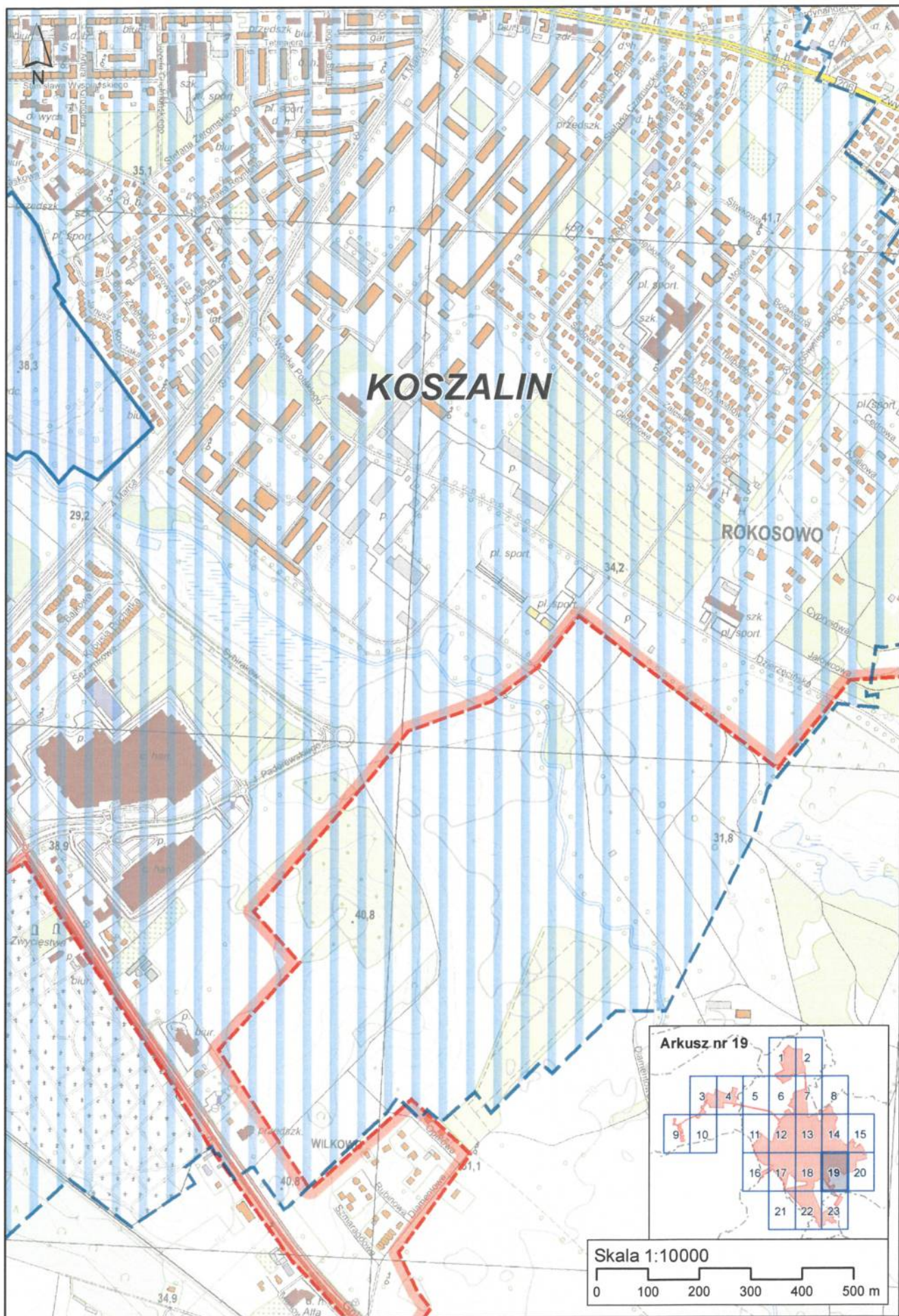
KOSZALIN

Podgórze

Żabowo

RADUSZKA

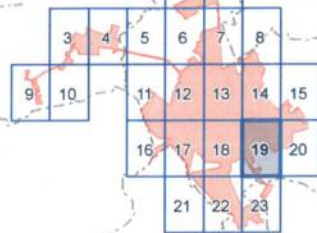
SARZYNO



KOSZALIN

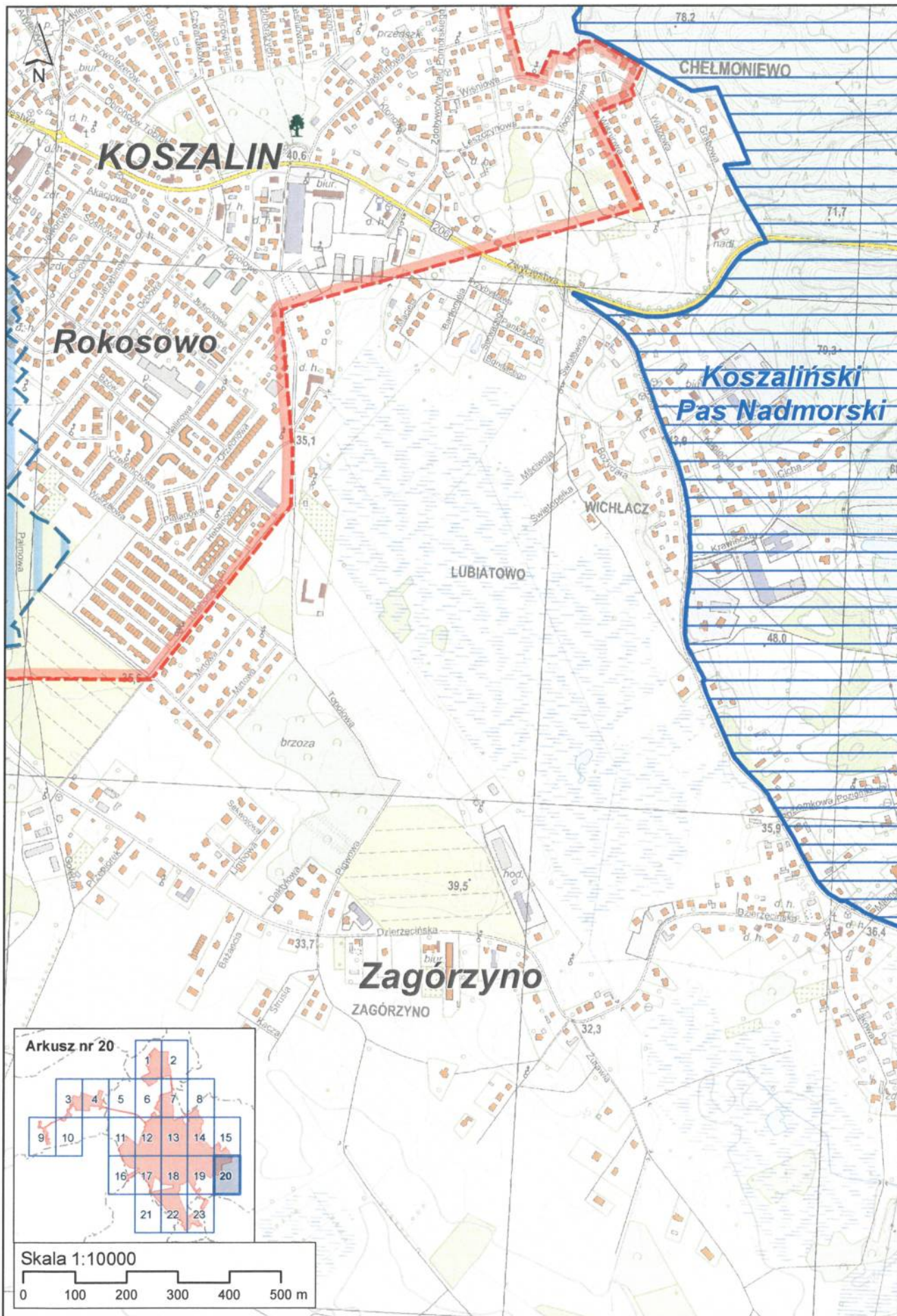
ROKOSOWO

Arkusze nr 19

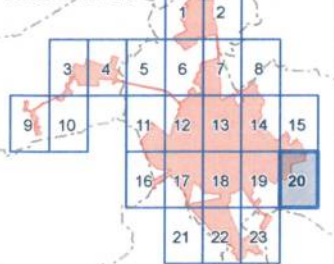


Skala 1:10000

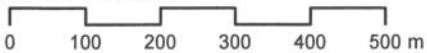


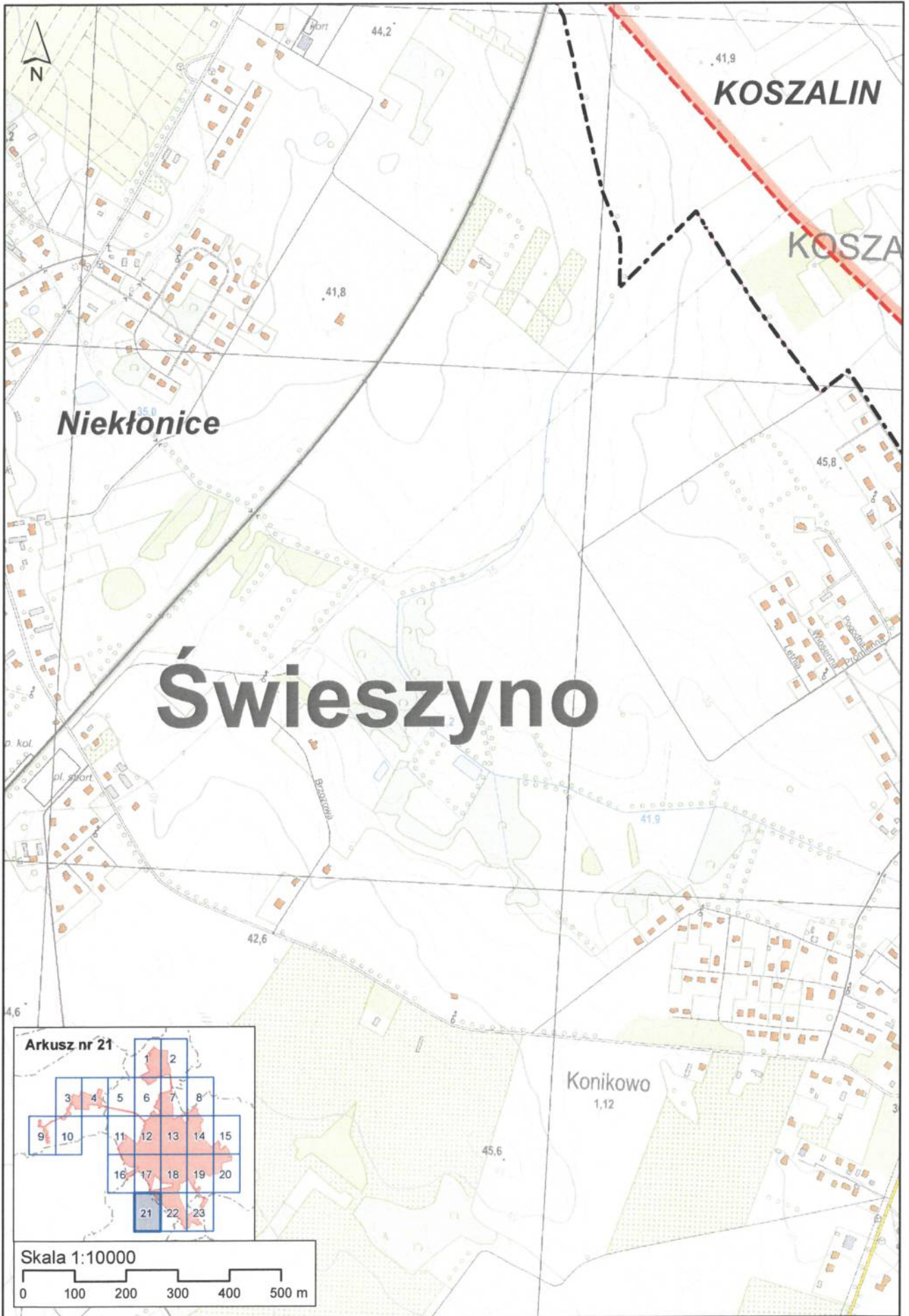


Arkusze nr 20



Skala 1:10000





Nieklonice

KOSZALIN

KOSZA

Świeszyno

Konikowo
1,12

